

Unit

1

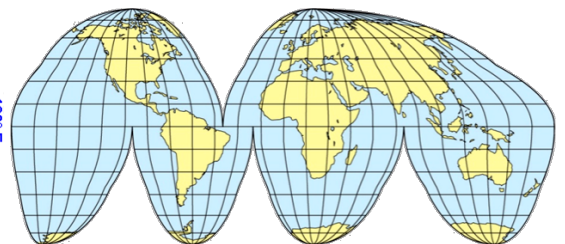
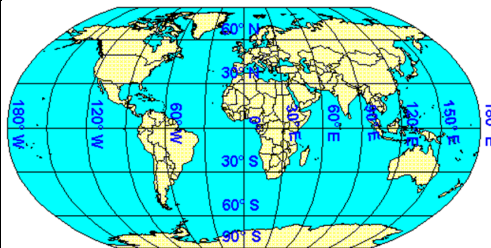
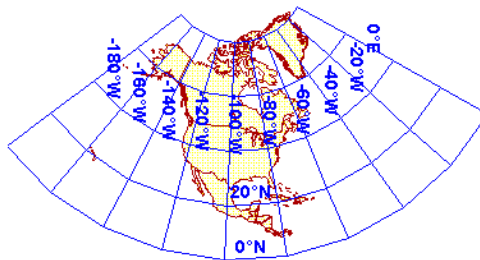
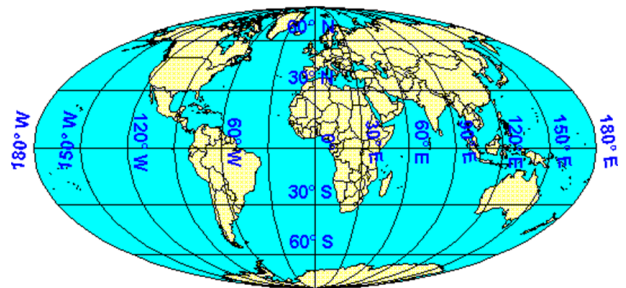
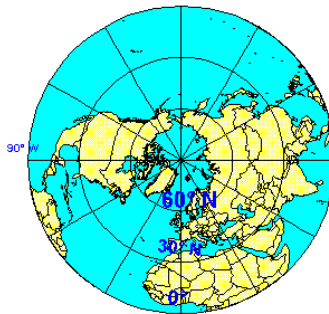
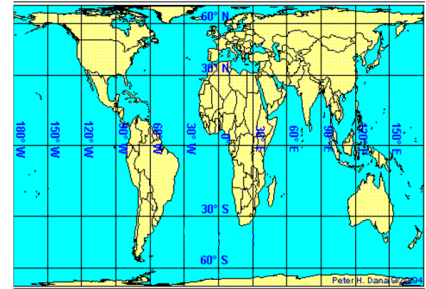
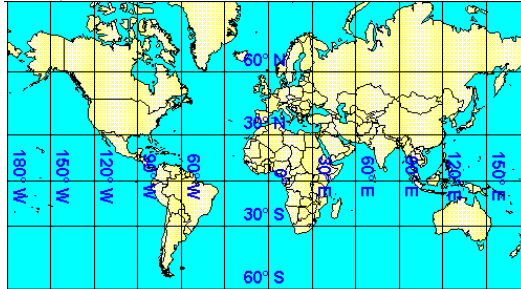
Map Scale and Projections

All About Maps 2

The following information corresponds to the All about Maps reading and the online videos. Fill in the blanks to complete the definition or sentence, and answer any open-ended tasks completely. All of the following data in addition to your reading is important, not just the blanks you fill in.

Types of Projections

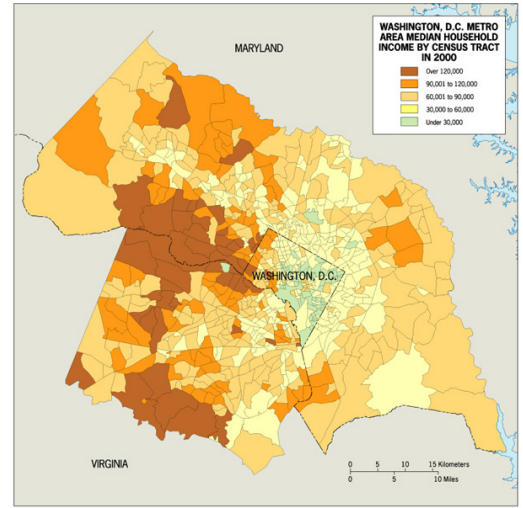
- Identify the following map projections, and identify ONE benefit for the use of each projection:



Types of Projections (cont'd)

- Define: reference map - _____
- Define: thematic map - _____

Identify the type of map each represents below:



- Define symbolization; give TWO examples - _____
- Define: relief (or topographical) map - _____
- Define isolate; give TWO examples - _____

Technology and its Impact on Maps

- Define: Global Positioning System (GPS) - _____
- Define: absolute location and site - _____
- Define: relative location and situation - _____
- Define: Geographic Information Systems (GIS) - _____
- Define: remote sensing; what are TWO ways to retrieve information via this method? _____

